

BRIEFING STRIP™

LOCATION

Elev **463'** /141m
N59 11.1 E009 34.0

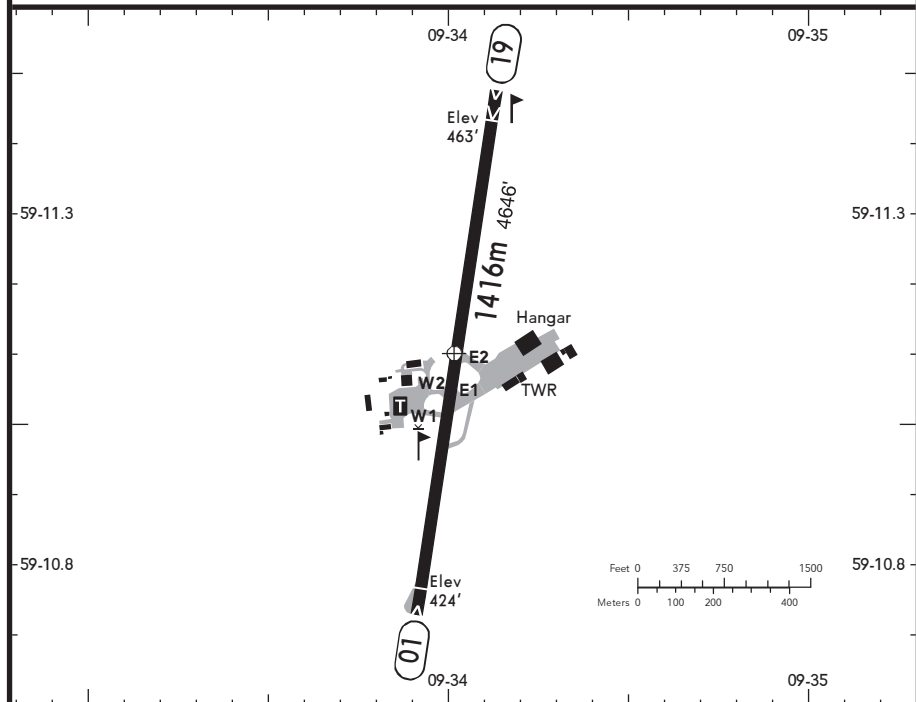
RADIO

GEITERYGGEN TRAFFIC **119.200**⁽¹⁾

ADMITTED AIRCRAFT



⁽¹⁾ Blind transmissions



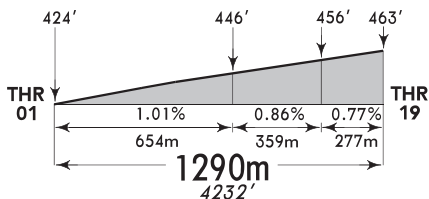
SCALE 1:20000

WDI - OBSTL.

RWY No	Dimension (m) - Surface	TORA (m)	LDA (m)	Strength	Lights
01 (007°) 19 (187°)	1416 x 30 Asphalt	1199	1161 1199	5.7t MTOW	---

^① RWY is grooved

Longitudinal profile
RWY 01/19



CAUTION: Downdrafts and wind shear may occur:

- on final RWY 19 when wind SE-W above 12 KT,
- on final RWY 01 when wind NW to NE above 12 KT.

Birds and deer in vicinity of AD.

Traffic circuits should be flown alternatively on the E & W side of RWY at 1500', 1 NM from RWY.

ARR VFR ACFT shall be established on final MNM 1 NM from THR.

DEP VFR ACFT shall climb MNM 1200' on RWY heading.

ARR/DEP shall proceed via one of the depicted points.

LDG/DEP of ACFT or HEL are not permitted when parachutists are in the air.

Pilots are instructed to maintain a listening watch on GEITERYGGEN TRAFFIC and report when starting up whether it is manned or not.

Before entering RMZ ACFT shall transmit call sign, ACFT type, position and intentions.

Transmissions shall also be made when passing in vicinity of compulsory REPs.